

Arc Express – *tech notes*

Add additional busy lamps to the console view

Description

This tech notes describes how an engineer can add additional busy lamp monitors to the server module of the Arc Express console.

There are two different methods that can be used to add a new Busy Lamp Field (BLF) to the Arc Express Console.

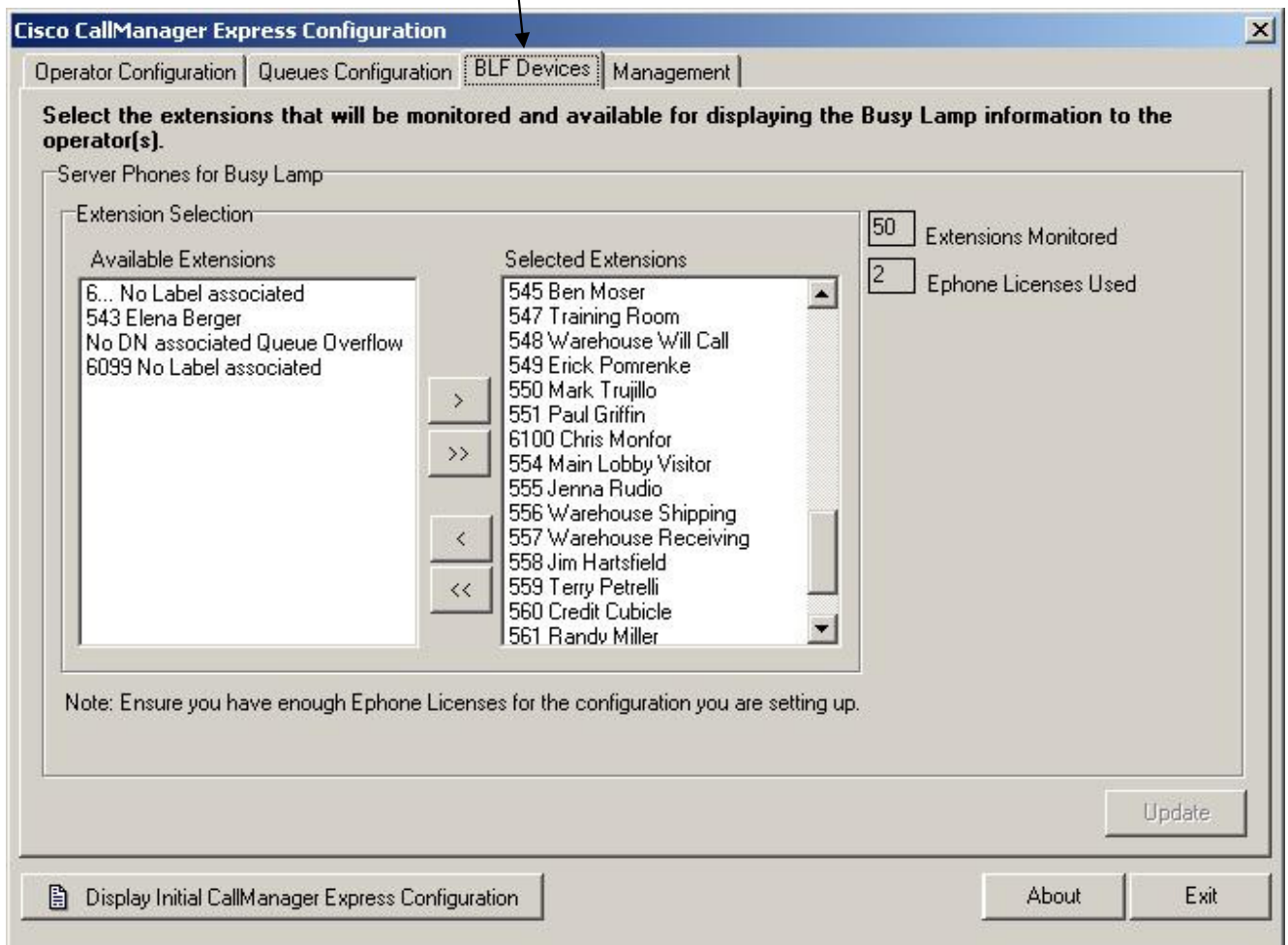
***** Please be aware that running the Wizard will remove all custom configurations from the Directory Module *****

Method 1 – Via the Arc Express Installation Wizard

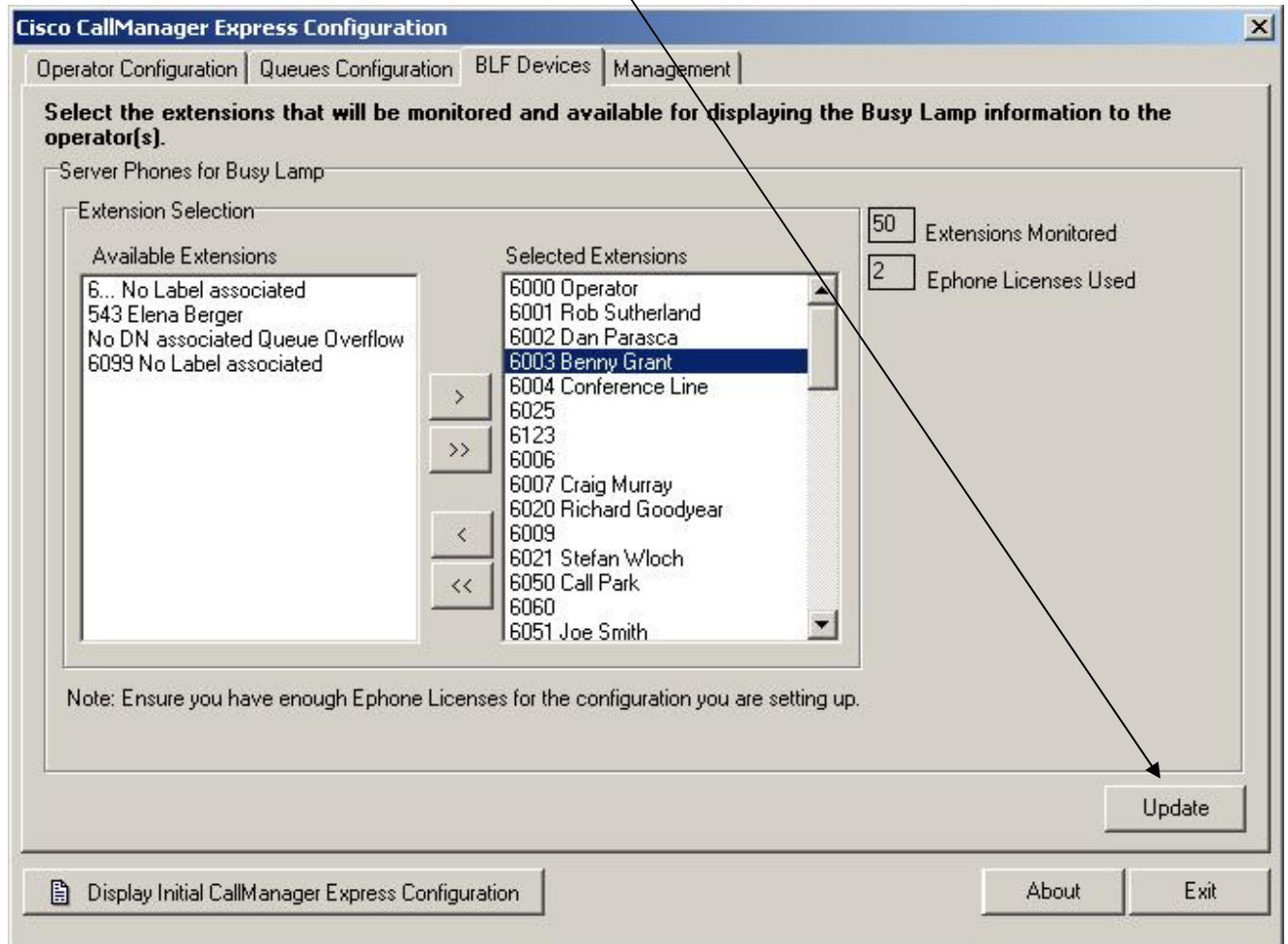
Run the ccmeconfig.exe (wizard) located here:

C:\Program Files\Mettoni\Arc Express\Server\Ccmeconfig.exe

Follow this wizard and select the “Busy Lamp” screen, add in all the busy lamps to be monitored.



After making the changes, press the “Update” button. It will become available once any changes are made. Exit the wizard.



Method 2 – Via the Arc Express Console & the CUCME

Open a *telnet* session to the CUCME. Enter the “**Show Run**” command, and locate the Busy Lamp Server Phone. There may be multiple busy lamp server phones as there are only 34 lines per server phone to monitor busy lamp.

Locate the phone that does not have the full 34 lines allocated to being monitored. For example:-

```
ephone 108
username "Arc-BLFServer-4" password cisco
mac-address 2220.389A.EF72
type 7960 addon 1 7914 2 7914
button 1m103 2m120 3m121 4m122 5m123 6m124 7m125 8m126
button 9m127 10m130 11m131 12m132 13m133 14m134 15m135 16m136
```

```
button 17m137 18m138
```

In this example, the Arc-BLFServer-4 phone currently has only 18 lines being used for “monitoring”. Therefore, add another monitored DN using the following command:

```
ccme# conf t  
ccme#<config>ephone 108  
ccme#<config-ephone>button 19m139
```

Where 139 is the DN of the phone to be monitored

Once this has been done, add the busy lamp phone in the Arc Express console directory to the Busy Lamp Group by right clicking on it and selecting “Add to Busy Lamp -> Busy Lamp Group”

